

Self-actuating powder fire extinguishers FINFIRE

The easiest and fastest device
to extinguish the fire



The product is certified by FGBOU VO "Academy State Fire Service of the Ministry of Emergency Situations of Russia".



FINFIRE™

■ About FINFIRE fire extinguishers



Fire extinguishers «SPHERE» and «TAB» are used as a elementary fire extinguishing device of solid, liquid and gaseous substances electrical equipment under voltage.



These fire extinguishers are triggered automatically, they are totally autonomous, they don't demand the human presence for use, and for installation — no special sensors or complex installation. The fire source will be instantly localized.

If you equip the premises with FINFIRE fire extinguishers, the probability of an accidental fire is reduced several times.

Certified production:

- GOST R ISO 9001-2015 (ISO 9001:2015)
- GOST R ISO 14001-2016 (ISO 14001:2016)
- GOST R 54934-2012 (OHSAS 18001:2007)

■ Principle of operation



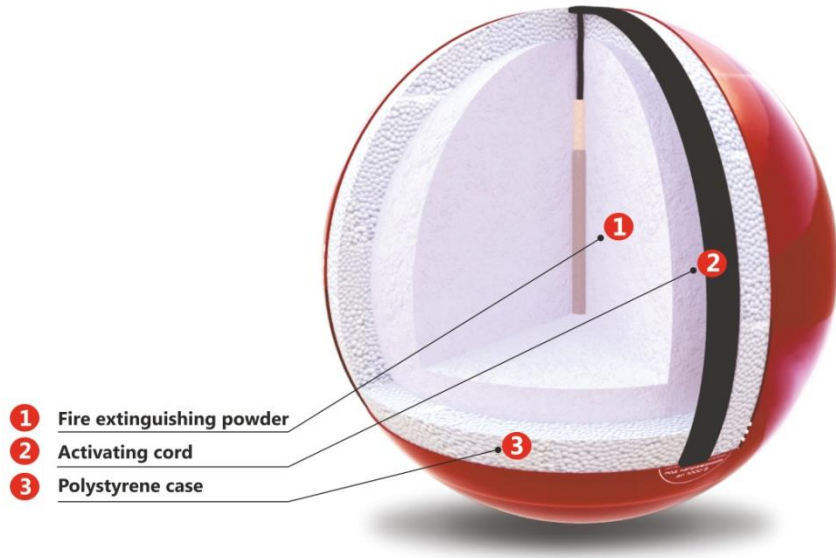
The **simple construction** of the device doesn't demand the special skills and great physical effort; doesn't demand approaching the source of fire, as is needful for traditional fire extinguishers, which allows untrained people to use "SPHERE" and "TAB".

The device can be throw into a burning room through doorways or window openings, it is avoiding the risk of entering the danger zone.

In contact with a fire, the device **activates automatically within 3-10 seconds** and instantly extinguishes the fire source.

Activation of the device is accompanied by a characteristic pop, which can be a kind of alarm signal.

■ How do «SPHERE» and «TAB» work?



«SPHERE» and «TAB» consist of a polystyrene (foam) case with fire extinguishing powder FINNFIRE ABCE inside, was developed at the KCHZ plant «Agrochemicals».

Fire-conducting cords pass along the sides of the case, which activate the device when it comes into contact with fire within 3-10 seconds.

Fire extinguishing powder is thrown out from the device after activation, which liquidates the fire source totally.

- Don't need to open or press anything.
- The device is maintenance free..
- The device does not cause damage to property or people when triggered, as it is made of soft materials.

■ Technical characteristics



Characteristics FINFIRE «SPHERE» and «TAB»

Parameters	FINFIRE «SPHERE»	FINFIRE «TAB»
Response time	to 10 sec	to 10 sec
Protected volume	to 5 m ³	to 3 m ³
Diameter/height	150 mm	150/50 mm
Weight	1,6 kg	0,7 kg
Operating temperature range	from -50°C to +90°C	from -50°C to +90°C
Sound effect when triggered	at least 118 dB	at least 118 dB
Modes	autonomous, manual	autonomous, manual
Ecology	friendly	friendly
Guarantee service life	10 years	10 years

■ Advantages of FINFIRE fire extinguishers



Made in Russia



Easy to use – does not require special skills



High reaction speed to the occurrence of fire and instant suppression of fire



Maintenance free



Environmentally friendly, does not contain toxic substances



Autonomous and manual operation mode of the device



Safe for others when triggered

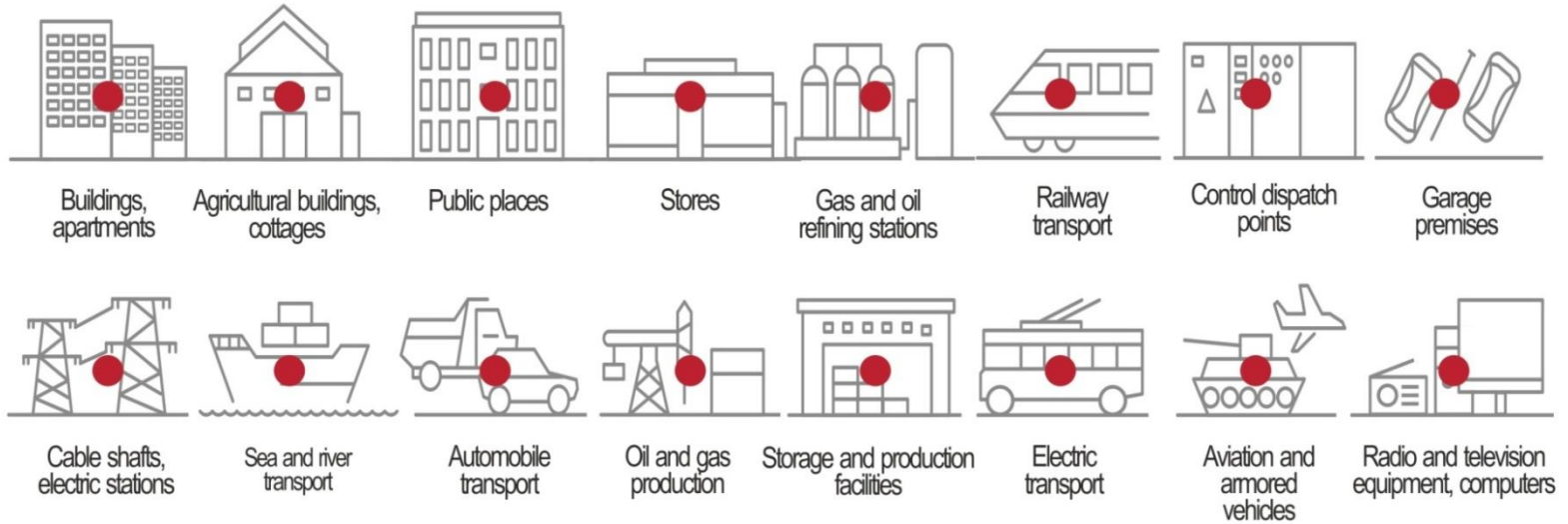


Noise alert when triggered

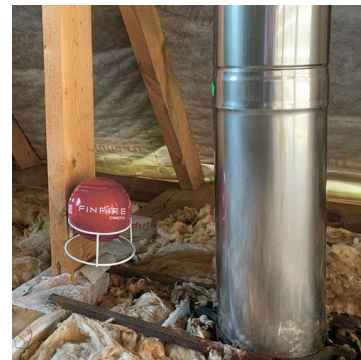


Service life – 10 years

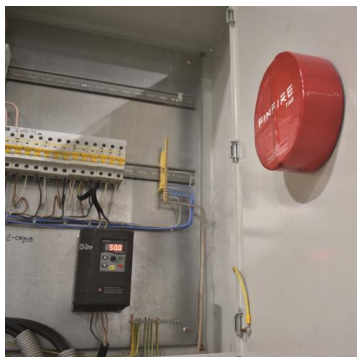
■ Scope of application:



■ Installing «SPHERE»



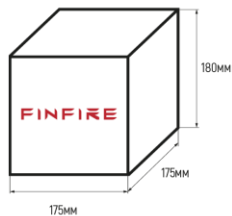
■ Installing «TAB»



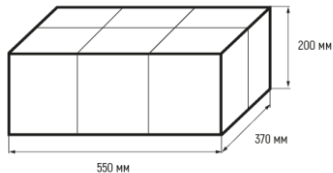
■ Package contents

Shipment of goods is carried out from the supplier's warehouse: 6, Proizvodstvennaya str., Kirovo-Chepetsk, Kirov region.

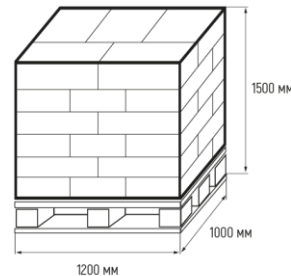
FINFIRE «SPHERE» packaging



Individual packaging
Size: **175 x 175 x 180 mm**
Gross Weight: **1.75 kg**

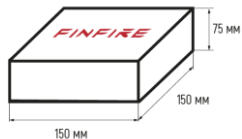


Packaging **6 pcs**
Size: **550 x 370 x 200 mm**
Gross weight: **10.6 kg**

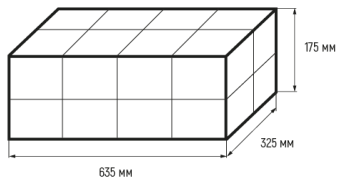


Pallet **210 pcs (35 boxes)**
Size: **1200 x 1000 x 1500 mm**
Gross weight: **370 kg**

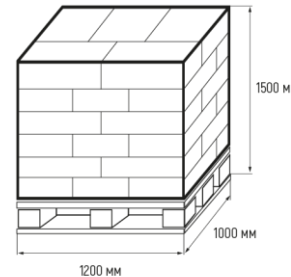
FINFIRE «TAB» packaging



Individual packaging
Size: **150 x 150 x 75 mm**
Gross Weight: **0.65 kg**

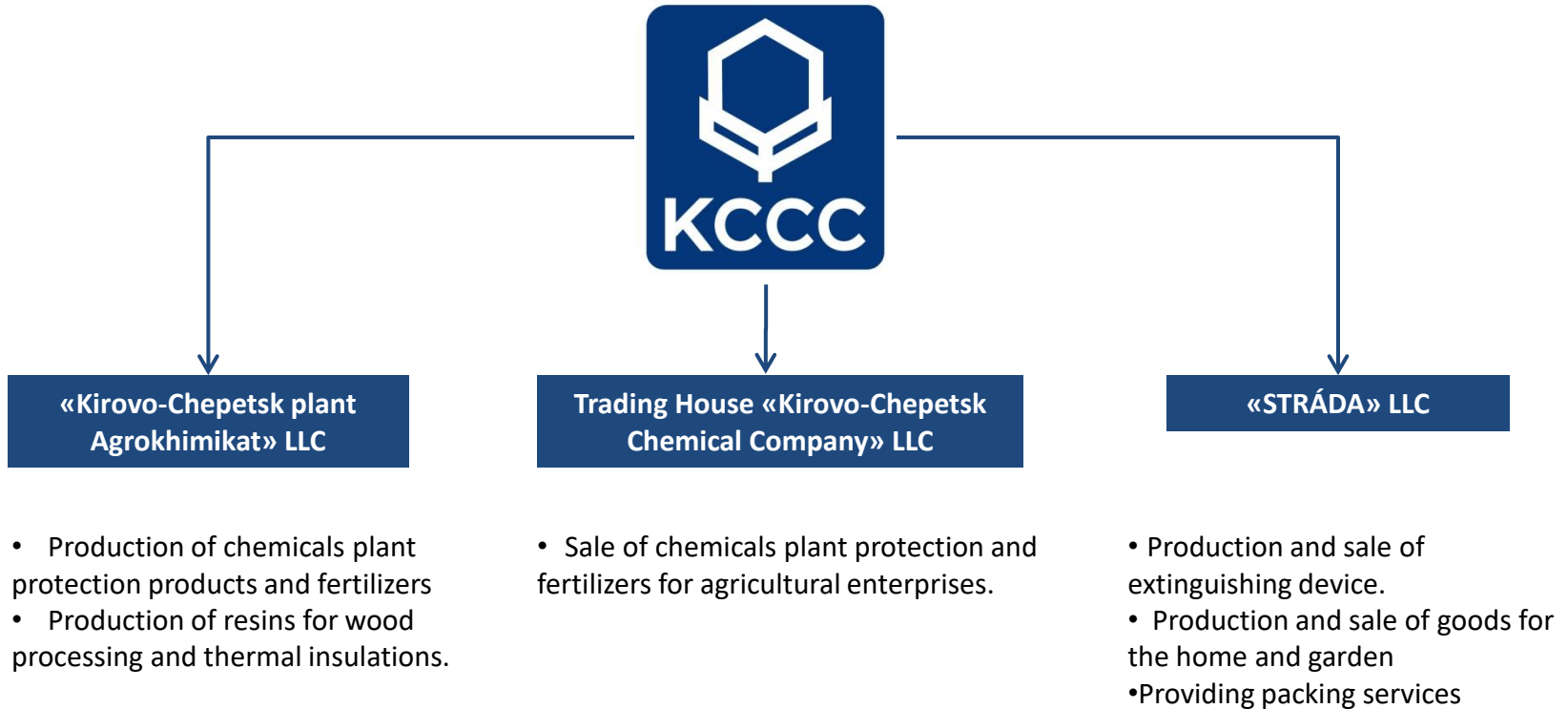


Packaging **16 pcs**
Size: **635 x 325 x 175 mm**
Gross weight: **10.5 kg**

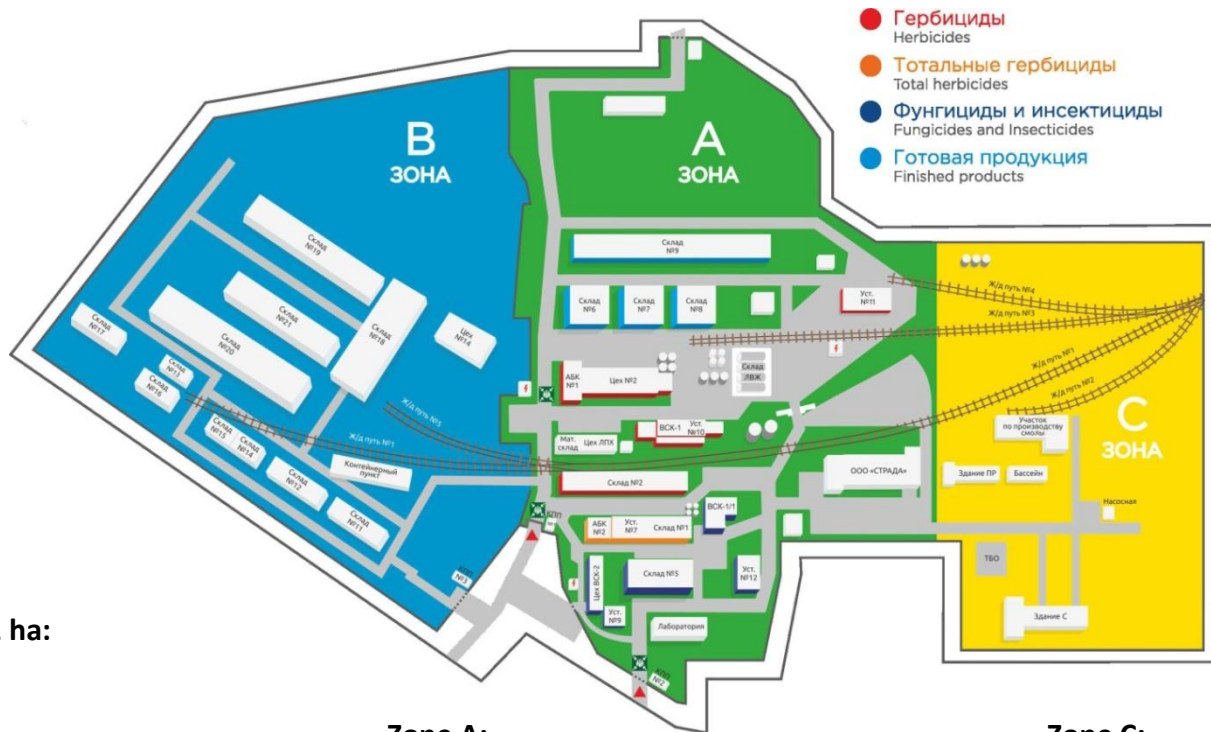


Pallet **448 pcs (28 boxes)**
Size: **1200 x 1000 x 1500 mm**
Gross Weight: **295 kg**

■ Structure of KCCC GROUP



■ Plant territory



Total area 32 ha:

Zone B:

- warehouses
- technological zone

Zone A:

- production and storage of plant protection products (PPP) for gardeners

Zone C:

- resins
- fertilizers

Location



1000 km to the East from Moscow

Balanced distance between suppliers of raw materials and customers



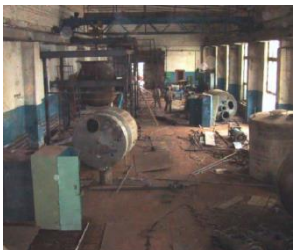
■ History



- Company foundation
- Trade in pesticides and fertilizers



- Development of production of a new formulations:
- Launch of production lines for emulsion concentrates and SL formulations



- Launch of the first line powder production line

- The first contract manufacturing with Bayer and Syngenta

History



- Development of production of products for gardeners
- JOY trademark registration

- Involvement in the international exhibition in Cologne (Germany)



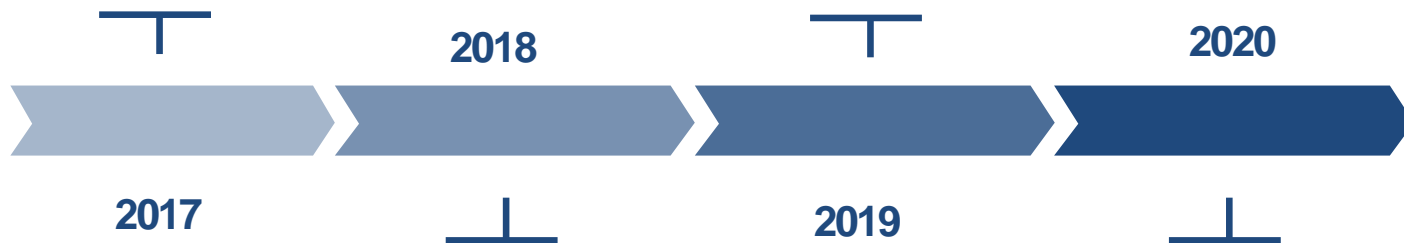
- LLC «Strada» foundation: production and sale of fertilizers, plant protection products (PPP) for gardeners

- Beginning of work with the federal networks of the Russian Federation and the countries in the near abroad.

History

- SEDA and FLY trademark registration

- Collaborative project with Uralchem «Accessible fertilizers for gardeners»



2017

2018

2019

2020

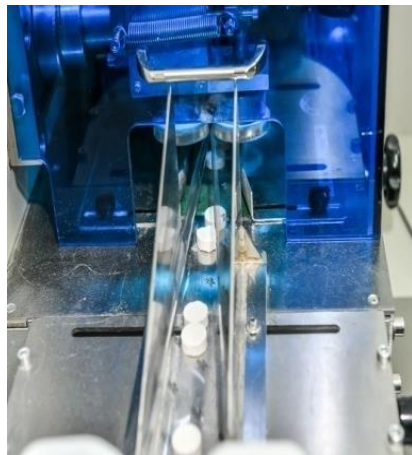
- Invention and production of FINFIRE fire extinguishing systems

- Opening an online shop joy-magazin.ru

- Registration and production of antiseptics and sanitizers



■ Production capacity



- Estimated annual capacity 133 560 000 l (kg) per year
- 22 Herbicides production lines (SL, EC, SC, SE, WG, OD, EW), total capacity 94400 thousand liters
- 10 production lines for Fungicides/Insecticides, fertilizers (EC, SC, SE)
- Total output – 38 160 thousand liters
- Lines for filling liquid products, powders, granules and piece products
- 2 Line for blowing PET bottles from preforms

■ Laboratory and Quality Control Department



- The laboratory is certified in accordance with Russian legislation
- The Technical and Analytical Control Department works 24/7
- Quality Control Department monitors incoming raw materials, materials and production, controls the shipment of finished products with photo fixation
- We have all range of equipment for production control

■ Trade marks

FINFIRE

